



Public Health

Prevent. Promote. Protect.

Franklin County Health Department

Live. Work. Play. Pray. Healthy!

FISCAL YEAR 2018 ANNUAL REPORT 2019 CALENDAR



Abbreviations for the Calendar

APHA	American Public Health Association
BOH	Board of Health
DPH	Department for Public Health
DSME	Diabetes Self-Management Education
FCHD	Franklin County Health Department
FCS	Franklin County Schools
FIS	Frankfort Independent Schools
KACO	Kentucky Association of Counties
KHCA	Kentucky Home Care Association
KHDA	Kentucky Health Department Association
KPHA	Kentucky Public Health Association
LD	Licensed Dietitian
NACCHO	National Association of County and City Health Officials
NALBOH	National Association of Local Boards of Health
PHAB	Public Health Accreditation Board
PHC	Public Health Center
RD	Registered Dietitian
RN	Registered Nurse
ALM Class	Active Living Movement Class at Good Shepherd Church 502-695-4266, Dorothy Schroeder



Dear Public Health System Partners:

Fiscal Year 2018 presented Franklin County Health Department (FCHD) and all Kentucky Local Health Departments (LHDs) with a huge financial challenge and even crisis. The state retirement contribution rate was increased for Fiscal Year 2019 to 83.43%. Due to Kentucky LHD classification as a quasi-governmental agency the increased cost burden was not covered by state funds. While the Kentucky Legislature recognized this and granted a Fiscal Year 2019 one year reprieve in retirement contribution rate increases for Kentucky LHDs, we will yet again be faced with an unsustainable increase to 83.43% in Fiscal Year 2020. The graph below shows the drastic retirement contribution rate increases for Kentucky LHDs.

This also presents a crisis for all Kentucky communities since Kentucky as a whole continues to rank poorly in health outcomes. In 2017 Kentucky's overall health ranking was only 42 out of 50, which did show improvement from the 2016 ranking of 45. This includes a ranking of 49 for drug related deaths, 44 for obesity, 46 for physical inactivity, and 49 for smoking (America's Health Rankings Annual Report); all of which continue to be local health challenges for Franklin County as well.

Kentucky LHDs are also the only agencies charged with providing infectious disease surveillance and monitoring, such as that required for the Kentucky Hepatitis A outbreak and routine Tuberculous (TB) testing and daily treatment for any individuals testing positive. FCHD and all Kentucky LHDs are mandated to provide a wide array of services to protect our communities that you will find highlighted throughout this report, such as WIC (Women, Infants and Children) nutritional support; pediatric immunizations; restaurant inspections; septic system evaluations; and school, hotel/motel, public swimming pool and campground inspections to name just a few. See page 31 for more information concerning the impact of the increased LHD retirement expenses on the health of Kentucky communities.

All FCHD team members are extremely grateful to Franklin County Fiscal Court and all Franklin County Citizens for their support. The Franklin County Public Health Taxing District was formed in 2000 with a tax rate of 4.00 and increases have only been requested due to retirement contribution expense increases in 2014 when the tax rate was set at 5.75 and 2018 when the tax rate was set at 7.25. For more information concerning FCHD's Revenue and Expenses please see page 24.

In the face of these financial challenges, FCHD remains committed to working with our many important public health system partners through MAPP (Mobilizing for Action Through Planning and Partnerships, see page 12) to create a community where everyone can enjoy Health while Living, Learning, Working, Playing and Praying in Franklin County. Please visit www.FCHD.org to access MAPP's Franklin County Community Health Assessment and Community Health Improvement Plan.

In Fiscal Year 2018 FCHD worked with partners to secure over \$96,000 in grant funding to support community health and programs addressing abstinence in middle and high schools; diabetes prevention and education; tobacco prevention and cessation; emergency preparedness; Zika prevention and education; sexually transmitted infection rate reduction; harm reduction and syringe exchange to prevent HIV and hepatitis C; and environmental radon exposure prevention and education.

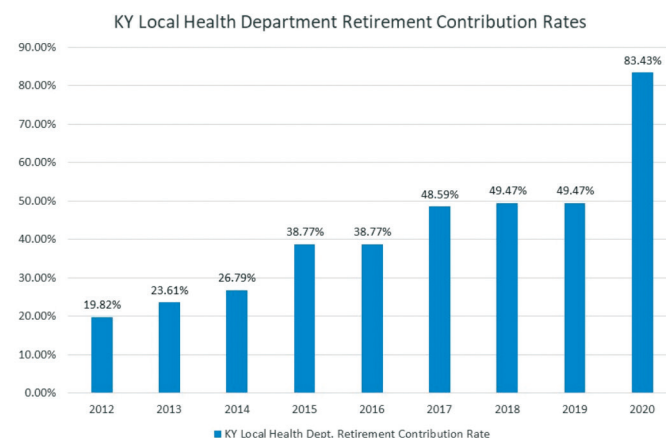
FCHD celebrated five years of becoming one of the first nationally accredited health departments and also submitted its application and documentation for reaccreditation in Fiscal Year 2018. The Public Health Accreditation Board process rigorously ensures that a health department is fulfilling the 10 Essential Public Health Services (see page 3) and that efficient administration and governance of the health department is maintained.

FCHD was also awarded full accreditation through the American Association of Diabetes Educators for its Healthy Living with Diabetes, Diabetes Self-Management Education and Support (DSMES) classes in Fiscal Year 2018. See page 14 for more information about diabetes education classes.

Other highlights from Fiscal Year 2018 can be found throughout this Annual Report. Thank you for being an important part of our public health system! Please let us know if you have any questions or concerns and we wish you a Healthy and Happy 2019!

Dr. Charles P. Bradshaw, Chair
Franklin County Board of Health

Judy A. Mattingly, MA
Public Health Director





Franklin County Health Department

100 Glenn's Creek Road
Frankfort, KY 40601

Monday - Friday
8:00 - 4:30

(Clinic open until 6:30 on Wednesdays)

Business Office

Phone: 502-564-4269
Fax: 502-564-9586

School Health

Phone: 502-564-7647
Fax: 502-564-9640

Accreditation/Training Services

Phone: 502-564-4269
Fax: 502-564-9586

Clinic Services

Phone: 502-564-7647
Fax: 502-564-9640

Clinic Hours

Mon, Tues, Thurs, Fri — 8:00 - 4:30
Wed — 8:00 - 6:30

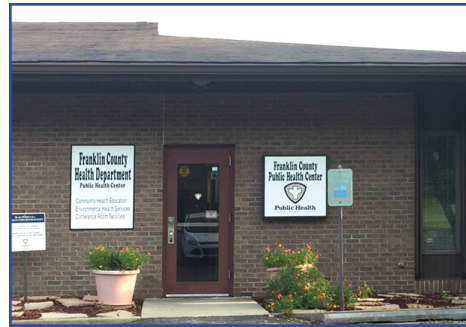
After Hours Emergencies

502-875-8582



Public Health
Prevent. Promote. Protect.

Franklin County
Health Department



Franklin County Public Health Center

851 East-West Connector
Frankfort, KY 40601

Monday - Friday
8:00 - 4:30

Community Health Education

Phone: 502-564-5559
Fax: 502-564-5672

Emergency Preparedness

Phone: 502-564-7382
Fax: 502-564-5672

Environmental Health Office Hours

8:00 am - 9:30 am
Phone: 502-564-7382
Fax: 502-564-5672

HANDS Services

Phone: 502-564-5559
Fax: 502-564-5672

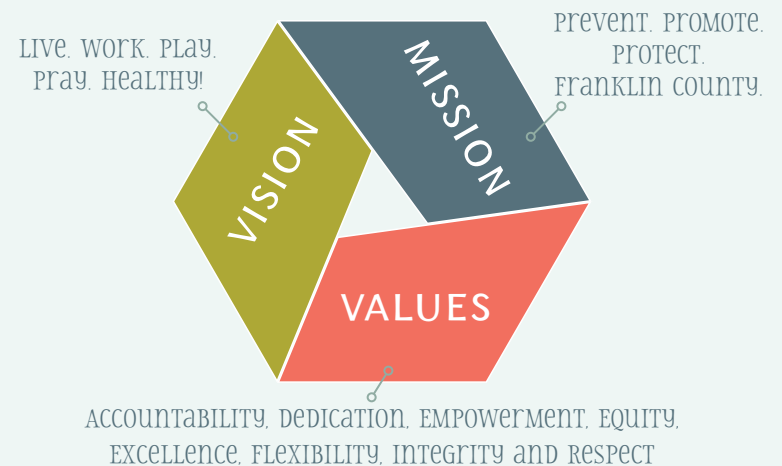
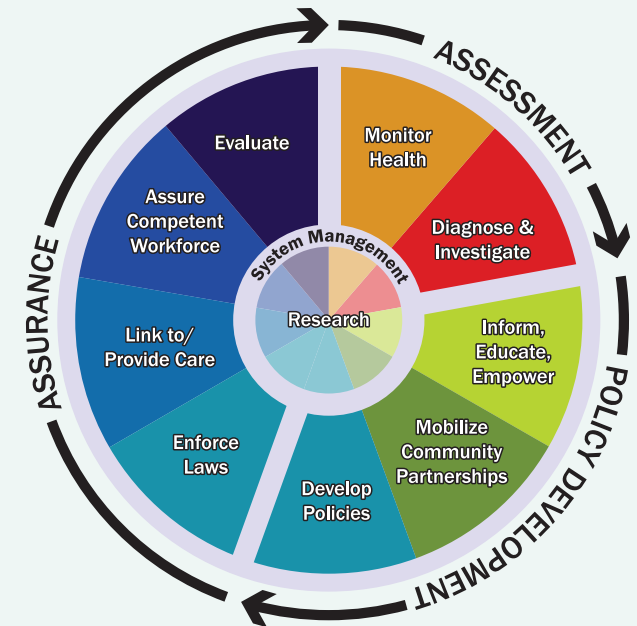
Home Health

Phone: 502-564-7383
Alt. Cell Number: 502-382-0648
Fax: 502-564-9587

Connect With Us



10 ESSENTIAL
Public Health Services





REFERRALS FOR HANDS

- FCHD CLINIC
- CHURCH
- HOSPITAL
- SELF REFERRAL
- DOCTOR'S OFFICE
- FRIENDS
- SOCIAL SERVICE ORGANIZATIONS

In June of 2017, House Bill 309 amended KRS 209A, a law that protects victims of domestic violence. The new law made several changes, including expanding protection to include intimate partner and dating violence victims, not just spouses. The amendment also mandates that professionals involved with the family link the victim to services and make direct referrals, rather than using mandatory reporting through the Cabinet for Health and Family Services. Victims are now empowered to use available resources at the time that is safest and most appropriate for them, instead of being contacted by the Cabinet at a time that might put them more at risk. The National Domestic Violence Hotline is 1-800-799-SAFE.

Having a baby is a joyful, but stressful time for parents. Fortunately, families across the state of Kentucky have access to the HANDS program, a home visiting service designed to support overburdened moms and dads in their parenting journey. The program is free for everyone and provides services from the prenatal period all the way through the child's second birthday. Parents have a great time learning about their pregnancy and child's development, while making toys and doing activities that promote brain stimulation, language development, bonding and a healthy lifestyle. Families love the HANDS program because not only do they have fun, but they learn important information and have support to reach their own goals and dreams.

Families meet weekly with their Family Support Worker from the time of pregnancy through the baby's first birthday. After that, they meet every other week until the baby is two years old. They also get quarterly visits, once every three months, with a nurse or social worker to cover special topics like preterm labor, breastfeeding, and teething. Each session is 30 minutes to an hour long.



Families go through our Growing Great Kids curriculum with their Family Support Worker (FSW). After the prenatal curriculum, sections are divided by age (i.e., 0-3 months, 4-6 months, etc.) and cover the same five areas: Basic Care, Social and Emotional, Physical and Brain, Cues and Communication and Play and Stimulation. We also use a curriculum called Growing Great Families that covers family values, culture and traditions, what parents want for their child, goals and other important topics. After the baby is born, families will complete Ages and Stages questionnaires every two months to track their baby's development. Parents have a great time completing curriculum activities with their babies and making fun toys that support their baby's development.

It is important to participate because HANDS families have fun while learning about how to best support their child's physical health, brain development, language and emotional health. Families get support in setting goals for themselves and get encouragement and positive feedback for growing their parenting skills. HANDS has proven outcomes regarding fewer low birth weight babies, fewer ER visits, better dental health, and lower incidents of child abuse and neglect, to name a few. Long term studies show HANDS children to have greater school success.

DECEMBER 2018
S M T W T F S
1
2 3 4 5 6 7 8
9 10 11 12 13 14 15
16 17 18 19 20 21 22
23 24 25 26 27 28 29
30 31

JANUARY 2019

CERVICAL HEALTH AWARENESS MONTH

FEBRUARY 2019
S M T W T F S
1 2
3 4 5 6 7 8 9
10 11 12 13 14 15 16
17 18 19 20 21 22 23
24 25 26 27 28

SUNDAY	MONDAY	TUESDAY	WEDNESDAY	THURSDAY	FRIDAY	SATURDAY
		NEW YEAR'S DAY 1 FCHD CLOSED FCH & FIS CLOSED	2 FCH & FIS CLOSED	3	4	5
6	7	8	9 FOOD HANDLERS CLASS 9:00AM AT PHC	10	11	12 DIABETES SELF MANAGEMENT CLASS 9:00 - 4:30 AT PHC
13	14	15	16 FOOD HANDLERS CLASS 9:00AM AT PHC	17	18	19
20	21 MLK DAY FCHD CLOSED FCH & FIS CLOSED	22	23 FOOD HANDLERS CLASS 9:00AM AT PHC	24	25	26
27	28	29	30 FOOD HANDLERS CLASS 9:00AM AT PHC	31 DIABETES SUPPORT GROUP 4:30 - 5:30 AT CAPITAL CITY ACTIVITY CENTER	CONTACT JENNIFERS.ROBINSON@KY.GOV FOR MORE INFORMATION REGARDING 2019 FREEDOM FROM SMOKING CLASSES	

HOME BAKERS LAW

HB 263, the Home Bakers Law saw passage this legislative session. HB 263 allows Kentuckians to produce/process whole fruits & vegetables, mixed greens, jams, jellies, sweet sorghum syrup, preserves, fruit butter, bread, fruit pies, cakes or cookies in their home kitchen without being permitted or registered. This will be administered by the DPH Food Safety Branch, not FCHD.

HEPATITIS A

Many questions and concerns from establishments and the community have been received regarding Hepatitis A. Wes Clark has worked with Emergency Management Director, Tommy Russell, and Downtown Frankfort to secure portable hand wash stations and increased port-a-johns for outdoor events. Educating food service employees, and other staff of regulated facilities is an ongoing effort. We provide information during inspections and at food handler classes regarding Hep A and recommend vaccination.

FACILITY INSPECTION

Restaurants have easily complied with the new Board of Health Policy (EICP- 7) requiring Food Service Inspection Report Posting. FCHD continues to post inspection scores on FCHD.org monthly.

2 RESTAURANT FIRES

Staff worked with 2 local restaurants who experienced major fires in FY 18. Cattleman's Roadhouse and Captain D's East were both closed. Cattleman's has since reopened and Captain D's East is rebuilding in it's same location.

FREE RADON KITS

Free Radon Kits are available to all Franklin County Residents. FCHD secured a \$15,000 EnviroHealthLink Grant for Radon Awareness, testing and education. The Community Health Education Team, Clinic and Environmental Health Staff are working together to promote this important topic to our community.

Environmental Health

WALMART WATER MAIN BREAK

Staff spent New Year's Eve 2017 closing Walmart due to a water main break. Staff worked late into the night closing the facility, then worked New Year's Day to ensure safe reopening once repairs were completed.

ONSITE SEPTIC EVALUATIONS

Environmental Internal Control Policy-6 now mandates on-site sewage backhoe pits to allow for better soil evaluation. This last year was a busy, wet year. Failing septic systems plus heavy rain created a dangerous public health hazard. Many of the failing septic systems we work with have very little options for correction resulting in very costly challenges for homeowners.

MOSQUITO FOGGING

The Kentucky Department of Agriculture continues to work with FCHD in response to requests for mosquito fogging in areas identified as heavy infestation.

JANUARY 2019
S M T W T F S
1 2 3 4 5
6 7 8 9 10 11 12
13 14 15 16 17 18 19
20 21 22 23 24 25 26
27 28 29 30 31

FEBRUARY 2019

AMERICAN HEART MONTH

MARCH 2019
S M T W T F S
1 2
3 4 5 6 7 8 9
10 11 12 13 14 15 16
17 18 19 20 21 22 23
24 25 26 27 28 29 30
31

SUNDAY	MONDAY	TUESDAY	WEDNESDAY	THURSDAY	FRIDAY	SATURDAY
					1 WEAR RED DAY	2
3	4	5	6 FCHD PHAB REACCREDITATION SITE VISIT FOOD HANDLERS CLASS 9:00AM AT PHC	7	8	9
10	11	12	13 FOOD HANDLERS CLASS 9:00AM AT PHC	14 VALENTINE'S DAY FCHD CLOSED FOR STAFF DEVELOPMENT	15 FCS & FIS CLOSED	16
17	18 PRESIDENT'S DAY FCS & FIS CLOSED	19	20 FOOD HANDLERS CLASS 9:00AM AT PHC	21	22	23
24	25	26	27 FOOD HANDLERS CLASS 9:00AM AT PHC	28		

February 27, 2018 FCHD celebrated 5 years of achieving its PHAB accreditation status. FCHD was one of the first health departments in the nation to achieve accreditation. Since then, 14 Kentucky Health Departments have achieved an accreditation status. Additionally, this has put Kentucky on the map as a leading state in the nation of accredited health departments.

Reaccreditation efforts began in FY18. FCHD's reaccreditation application opened on January 1st with a due date of June 30th. FCHD submitted it's application for reaccreditation on May 22nd. Next steps involve uploading all documentation and awaiting a review from PHAB site visitors and a virtual site visit in FY19.



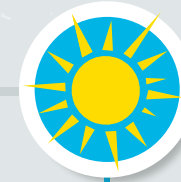
Why become an accredited health department?
Accreditation is a voluntary accreditation provided by a national accrediting body – Public Health Accreditation Board (PHAB). Accreditation provides a framework for a health department to identify performance improvement opportunities, to improve management, develop leadership and improve relationships with community partners. It's the gold standard.

FCHD has seen numerous advantages since becoming an accredited health department. Increased competitiveness for funding opportunities, better communication with Franklin County's Board of Health and increased accountability to external stakeholders and community partners to name a few. Additionally, FCHD has seen an increase in the agency's culture of quality and performance improvement and greater accountability and transparency within the health department.

"Git R Funded" was a Quality Improvement (QI) project implemented in 2012. Through this project it was a goal to increase grant funding and develop a decision tree for when to apply for grants and develop a grant tracking form. FCHD was also awarded a NACCHO Model Practice Award in 2014 for this project. FCHD has continued to use this decision tree since its implementation and has incorporated a goal into FCHD's 2015-2020 strategic plan aiming to increase grant funding. The strategic plan goal states, "FCHD will increase grant funding from an average of \$45,000 per fiscal year to \$55,000 per fiscal year by 2020".

During FY18 FCHD secured \$96,002.44 in grant funds! FCHD staff has worked hard to secure grant funding for programs during uncertain budget times and following the decision tree and grant tracking form created by the "Git R Funded" QI team has been instrumental in the process of increasing our grant funding in recent years.

GRANT FUNDING	
FY16	\$71,810.65
FY17	\$51,389.36
FY18	\$96,002.44



Franklin County MAPP continued to meet and strategize community health improvement efforts for Franklin County during FY18. As of June 30, 2018 39% of strategies listed in the Community Health Improvement Plan (CHIP) had been completed and 51% were in progress. Franklin County MAPP partners and FCHD will begin planning for the next iteration and cycle of MAPP. The next year will be spent planning and strategizing what Franklin County MAPP partners can do to help improve the health of Franklin County through surveying the community, collecting and researching local data and health statistics, key informant interviews and prioritizing areas of need in Franklin County.



FEBRUARY 2019
 S M T W T F S
 1 2
 3 4 5 6 7 8 9
 10 11 12 13 14 15 16
 17 18 19 20 21 22 23
 24 25 26 27 28



MARCH 2019

TEEN DATING VIOLENCE AWARENESS MONTH

APRIL 2019
 S M T W T F S
 1 2 3 4 5 6
 7 8 9 10 11 12 13
 14 15 16 17 18 19 20
 21 22 23 24 25 26 27
 28 29 30

SUNDAY	MONDAY	TUESDAY	WEDNESDAY	THURSDAY	FRIDAY	SATURDAY
					1 EMPLOYEE APPRECIATION DAY	2
3	4	FAT TUESDAY 5	ASH WEDNESDAY 6 FOOD HANDLERS CLASS 9:00AM AT PHC	7	8	9
10 DAYLIGHT SAVING TIME	11	12	13 REGISTERED DIETITIAN NUTRITION DAY FOOD HANDLERS CLASS 9:00AM AT PHC	14	15 FCS CLOSED	16
SAINT PATRICK'S DAY 17	18 BOARD OF HEALTH MEETING 6PM AT PHC	19	20 FOOD HANDLERS CLASS 9:00AM AT PHC	21	22	23
24 UNITE TO END TB 31	25 FIS SPRING BREAK 3/25 - 4/12	26	DIABETES ALERT DAY 27 FOOD HANDLERS CLASS 9:00AM AT PHC  FCHD GO365 COMMUNITY SCREENING EVENT AT PHC	28	29	30

SCHOOL HEALTH

NUTRITION SERVICES

PHYSICAL EDUCATION

HEALTH EDUCATION

HEALTH SERVICES

COUNSELING & SUPPORT SERVICES

HEALTHY SCHOOL ENVIRONMENT

HEALTH PROMOTION FOR STAFF

FAMILY & COMMUNITY INVOLVEMENT

 positivepotential

A Positive Approach to Teen Health
Empowering youth to make healthy choices

FCHD was awarded a grant for approximately \$30,000 from the Kentucky Department for Public Health to deliver an abstinence program to our local middle schools. "Positive Potential" is an evidenced based curriculum that is specifically tailored for 6th – 8th graders. School health registered nurses led this program at Bondurant Middle School in FY 18. Almost 700 middle school students received education in subjects such as bullying, self-confidence and risky behavior. We plan to extend this program to our community middle schools in FY 19 in hopes to reach this youth population in a positive and influential way.

Hepatitis A requirements for school year 2018-19 effective July 1, 2018 are as follows (KAR 902 2:060):
2 dose series of Hepatitis A vaccine (Age: 12 months through 18 years)

In February 2016, the Franklin County Health Department partnered with Franklin County Schools to find solutions to increase 6th grade immunization compliance rates. The QI Team determined that a school health readiness fair called the "One Stop Shop" would be a helpful solution in hopes of increasing compliance. This health fair includes services such as health physicals, immunizations, dental screenings, and vision screenings. In FY 18, FCHD provided care to 68 students who were in need of these services. We plan to increase these services in FY 19.



FCHD provided dental fluoride varnish to 468 preschool through 5th grade students in Frankfort and Franklin County. School health registered nurses conducted dental screenings and fluoride applications in 8 schools. We plan to increase the number of participants by 10% in FY 19.

MARCH 2019
S M T W T F S
1 2
3 4 5 6 7 8 9
10 11 12 13 14 15 16
17 18 19 20 21 22 23
24 25 26 27 28 29 30
31

MAY 2019
S M T W T F S
1 2 3 4
5 6 7 8 9 10 11
12 13 14 15 16 17 18
19 20 21 22 23 24 25
26 27 28 29 30 31

APRIL 2019

NATIONAL CHILD ABUSE PREVENTION MONTH

SUNDAY	MONDAY	TUESDAY	WEDNESDAY	THURSDAY	FRIDAY	SATURDAY
	APRIL 1-7 NATIONAL PUBLIC HEALTH WEEK 1 FCS CLOSED 4/1 - 4/5	SEXUAL ASSAULT AWARENESS MONTH DAY OF ACTION 2	3 FOOD HANDLERS CLASS 9:00AM AT PHC	4	5	6
7 WORLD HEALTH DAY	8	9	10 FOOD HANDLERS CLASS 9:00AM AT PHC KPHA ANNUAL CONFERENCE · NORTHERN KY CONVENTION CENTER	11	12	13
PALM SUNDAY 14	TAX DAY 15	16	17 FOOD HANDLERS CLASS 9:00AM AT PHC	18	GOOD FRIDAY 19 FCHD CLOSED 1/2 DAY	20
EASTER 21	22	23	24 ADMINISTRATIVE PROFESSIONALS DAY FOOD HANDLERS CLASS 9:00AM AT PHC	25	26	27
28	29	30  FCHD GO365 COMMUNITY SCREENING EVENT AT PHC				

Our Public Health System



Your public health system was hard at work during Fiscal Year 2018. Franklin County Mobilizing for Action Through Planning and Partnership (MAPP) has successfully began and/or completed 90% of their Community Health Improvement Plan (CHIP) goals!

The following snapshots represent some of our CHIP goals! To view our entire CHIP please visit www.fchd.org or contact Debbie Bell at debbiey.bell@ky.gov.

— MAPP WORKGROUPS BASED ON FRANKLIN COUNTY'S STRATEGIC ISSUES —

HEALTH RISKS

- STDs
- pertussis
- domestic violence
- substance abuse
- heart disease & stroke
- smoking
- cancer
- diet/obesity/activity levels
- education to access healthy foods
- needle exchange
- alcohol abuse
- drug arrests
- drinking & driving
- homelessness

WELFARE OF THE FAMILY

- domestic violence
- child abuse
- family shift
- activities for 11-17 age group
- lack of after-school programs
- early intervention
- welfare
- good schools
- daycare options
- entertainment & events

MENTAL HEALTH

- mental health
- homelessness
- behavioral health

PUBLIC SAFETY

- safety at home
- growing crime
- pedestrian safety
- texting & driving
- low crime/safe neighborhoods
- safety at work
- human trafficking
- review, evaluation, enforcement, involvement in regulations and ordinances
- bullying/internet/social media

HEALTH & EDUCATION

- diet/obesity/activity levels
- no/low cost wellness activities
- being overweight
- poor eating habits
- active living
- worksite wellness
- community resource literacy/health literacy

APRIL 2019
S M T W T F S
1 2 3 4 5 6
7 8 9 10 11 12 13
14 15 16 17 18 19 20
21 22 23 24 25 26 27
28 29 30

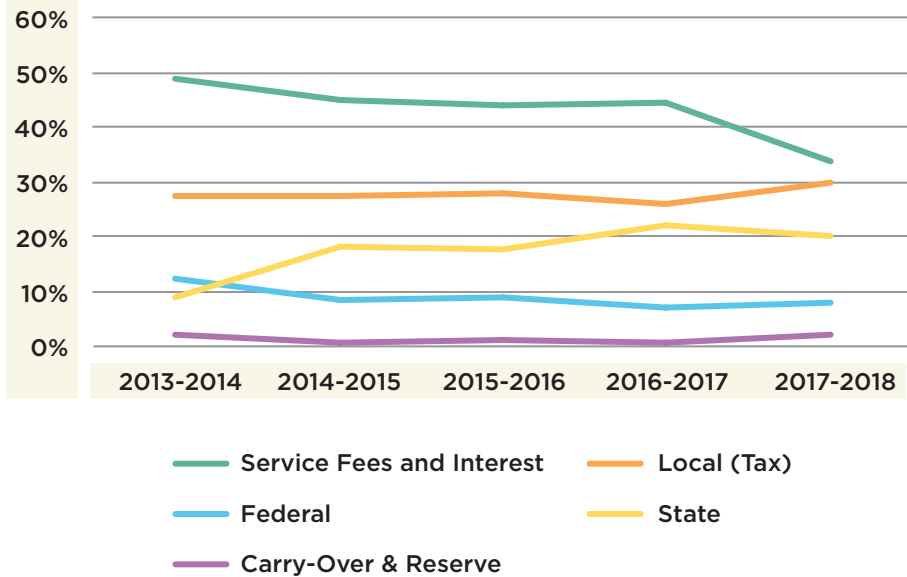
MAY 2019

NATIONAL PHYSICAL FITNESS AND SPORTS MONTH

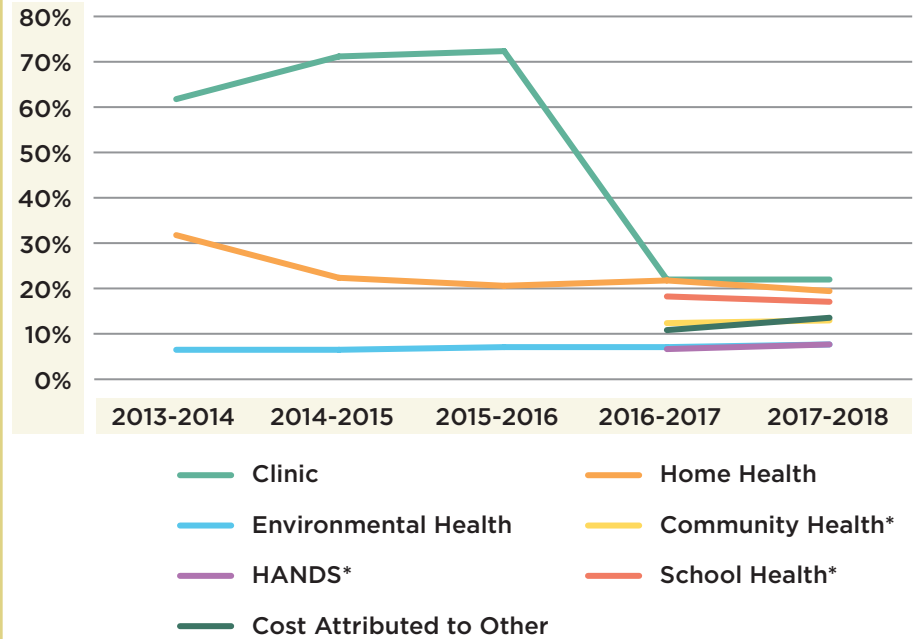
JUNE 2019
S M T W T F S
1
2 3 4 5 6 7 8
9 10 11 12 13 14 15
16 17 18 19 20 21 22
23 24 25 26 27 28 29
30

SUNDAY	MONDAY	TUESDAY	WEDNESDAY	THURSDAY	FRIDAY	SATURDAY
			1 FOOD HANDLERS CLASS 9:00AM AT PHC	2	3 FCS CLOSED	4 DERBY DAY
5 CINCO DE MAYO	6 NATIONAL NURSES DAY	7	8 WALK & BIKE TO SCHOOL DAY FOOD HANDLERS CLASS 9:00AM AT PHC	9	10	11
12 MOTHER'S DAY	13	14	15 FOOD HANDLERS CLASS 9:00AM AT PHC	16	17	18 PREAKNESS STAKES
19	20	21 FCS CLOSED	22 FOOD HANDLERS CLASS 9:00AM AT PHC	23	24 FCS LAST DAY FOR STUDENTS	25
26	27 MEMORIAL DAY FCHD CLOSED FIS CLOSED	28	29 FOOD HANDLERS CLASS 9:00AM AT PHC	30 FCHD GO365 COMMUNITY SCREENING EVENT AT PHC	31 WORLD NO TOBACCO DAY	

FINANCIAL — REVENUE SOURCES



FINANCIAL — REVENUE ALLOCATIONS



*2013-2016 Included with Clinic

REVENUE SOURCES	2017-2018	Percent	2016-2017	Percent		2015-2016	Percent	2014-2015	Percent	2013-2014	Percent
Service Fees & Interest	\$2,668,326.67	39.79%	\$3,134,544.05	44.40%		\$2,793,216.77	43.95%	\$2,744,742.22	45.17%	\$2,735,987.76	49.17%
Local (Tax)	\$2,000,007.55	29.83%	\$1,823,982.58	25.83%		\$1,789,142.66	28.15%	\$1,671,364.03	27.51%	\$1,533,222.79	27.56%
Federal	\$533,012.01	7.95%	\$501,171.62	7.10%		\$562,014.76	8.84%	\$517,398.69	8.51%	\$676,839.93	12.16%
State	\$1,348,017.00	20.10%	\$1,555,933.16	22.04%		\$1,121,985.32	17.66%	\$1,095,340.49	18.03%	\$499,125.46	8.97%
Carry-Over & Reserve	\$156,250.71	2.33%	\$44,794.60	0.63%		\$88,514.81	1.39%	\$47,481.01	0.78%	\$118,807.35	2.14%
Total	\$6,705,613.94	100.00%	\$7,060,426.01	100.00%		\$6,354,874.32	100.00%	\$6,076,326.44	100%	\$5,563,983.29	100%

REVENUE ALLOCATIONS	2017-2018	Percent	2016-2017	Percent	Revenue Allocations	2015-2016	Percent	2014-2015	Percent	2013-2014	Percent
Clinic	\$1,402,973.44	21.97%	\$1,339,473.51	21.98%	Clinic/Community Health	\$4,421,274.99	72.32%	\$3,831,743.11	70.94%	\$3,325,802.99	61.69%
Home Health	\$1,231,766.75	19.29%	\$1,334,067.15	21.89%	Home Health	\$1,259,443.47	20.60%	\$1,222,333.61	22.63%	\$1,704,395.78	31.61%
Environmental Health	\$487,972.01	7.64%	\$441,983.89	7.25%	Environmental Health	\$432,941.51	7.08%	\$347,309.11	6.43%	\$361,161.02	6.70%
Community Health *	\$828,803.58	12.98%	\$804,617.87	13.20%							
HANDS *	\$476,920.61	7.47%	\$405,245.44	6.65%							
School Health *	\$1,079,987.31	16.91%	\$1,108,552.41	18.19%							
Costs not attributable to above	\$878,518.61	13.75%	\$659,665.11	10.83%							
Capital	\$-	0.00%	\$-	0.00%	Capital	\$-	0.00%	\$0.00	0.00%	\$0.00	0.00%
Total	\$6,386,942.31	100.00%	\$6,093,605.38	100.00%	Total	\$6,113,659.97	100.00%	\$5,401,385.83	100%	\$5,391,359.79	100%

* In prior years these were included with Clinic/Community Health.

MAY 2019
S M T W T F S
1 2 3 4
5 6 7 8 9 10 11
12 13 14 15 16 17 18
19 20 21 22 23 24 25
26 27 28 29 30 31

JUNE 2019

NATIONAL SAFETY MONTH

JULY 2019
S M T W T F S
1 2 3 4 5 6
7 8 9 10 11 12 13
14 15 16 17 18 19 20
21 22 23 24 25 26 27
28 29 30 31

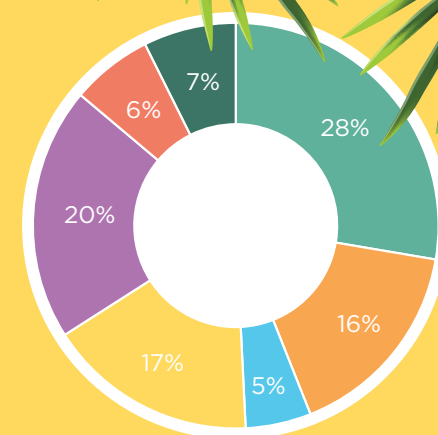
SUNDAY	MONDAY	TUESDAY	WEDNESDAY	THURSDAY	FRIDAY	SATURDAY
						1
2	3  FCHD G0365 COMMUNITY SCREENING EVENT AT PHC	4	5 FOOD HANDLERS CLASS 9:00AM AT PHC	6 FCHD CLOSED FOR STAFF TRAINING & DEVELOPMENT	7 BELMONT STAKES	8
9	10	11	12 FOOD HANDLERS CLASS 9:00AM AT PHC	13	14 FLAG DAY	15
FATHER'S DAY 16	17 BOARD OF HEALTH MEETING 6PM AT PHC	18	19 FOOD HANDLERS CLASS 9:00AM AT PHC	20	21 LONGEST DAY OF PLAY JUNIPER HILL	22
<div> <div>LIVING WELL G0365 DEADLINE 30</div>  </div>	23	24	25	26 FOOD HANDLERS CLASS 9:00AM AT PHC	27	28 29



FCHD Clinic Staff awarded the "Top Banana Award" for doing a great job at FCHD!

Clinical Services

July 1, 2017 - June 30, 2018



WIC Women/Infants/Children Nutritional Support program services	10,535
Family Planning services	6,212
STD screening	1,990
Preventive Physical Exams/ Cancer Screening /Laboratory screening	6,369
Immunizations and Pediatric services	7,686
Harm Reduction	2,469
Reportable Disease Investigations	2,806

The Franklin County Health Department is committed to a policy of providing opportunities to people regardless of economic or social status and will not discriminate on the basis of race, color, ethnic origin, national origin, creed, religion, political belief, sex, sexual orientation, gender identity, marital status, age, veteran status, or physical or mental disability.

FCHD is an equal opportunity provider and equal opportunity employer.

JUNE 2019
 S M T W T F S
 1
 2 3 4 5 6 7 8
 9 10 11 12 13 14 15
 16 17 18 19 20 21 22
 23 24 25 26 27 28 29
 30

JULY 2019

UV SAFETY MONTH

AUGUST 2019
 S M T W T F S
 1 2 3
 4 5 6 7 8 9 10
 11 12 13 14 15 16 17
 18 19 20 21 22 23 24
 25 26 27 28 29 30 31

SUNDAY	MONDAY	TUESDAY	WEDNESDAY	THURSDAY	FRIDAY	SATURDAY
	1	2	3 FOOD HANDLERS CLASS 9:00AM AT PHC	INDEPENDENCE DAY 4 FCHD CLOSED	5	6
7	8	9	10 FOOD HANDLERS CLASS 9:00AM AT PHC	11	12	13
14	15	16	17 FOOD HANDLERS CLASS 9:00AM AT PHC	18 HANDS GRADUATION CEREMONY AT PHC	19	20
21	22	23	24 FOOD HANDLERS CLASS 9:00AM AT PHC	25	26	27
28 WORLD HEPATITIS DAY	29	30	31 FOOD HANDLERS CLASS 9:00AM AT PHC			





JULY 2019
S M T W T F S
1 2 3 4 5 6
7 8 9 10 11 12 13
14 15 16 17 18 19 20
21 22 23 24 25 26 27
28 29 30 31

AUGUST 2019

NATIONAL BREASTFEEDING MONTH

SEPTEMBER 2019
S M T W T F S
1 2 3 4 5 6 7
8 9 10 11 12 13 14
15 16 17 18 19 20 21
22 23 24 25 26 27 28
29 30

SUNDAY	MONDAY	TUESDAY	WEDNESDAY	THURSDAY	FRIDAY	SATURDAY
				1	2	3
	4	5	6	7	8	9
			FOOD HANDLERS CLASS 9:00AM AT PHC			10
	11	12	13	14	15	16
			FOOD HANDLERS CLASS 9:00AM AT PHC			17
18	19	20	21	22	23	24
			SENIOR CITIZENS DAY FOOD HANDLERS CLASS 9:00AM AT PHC			
25	26	27	28	29	30	31
	WOMENS EQUALITY DAY		FOOD HANDLERS CLASS 9:00AM AT PHC			

PREPAREDNESS PROGRAM

The Public Health Preparedness program is charged with the responsibility of preparing FCHD to respond and mitigate natural and manmade hazards, bioterrorism and disease outbreaks.

Kentucky Department for Public Health (KDPH) sends out deliverables each year to guide local health departments to help meet federal guidelines. Throughout the year the FCHD preparedness coordinator reports to KDPH to make sure that we are meeting those deliverables.

HAN

The statewide and local alerts network made a switch from HAN (Health Alert Network) to ReadyOps in June 2018. ReadyOps drills are completed by appropriate staff every quarter. This new system is used by hospitals, emergency management and other local health departments, to name a few. It is important that communication devices/outlets are tested, checked and exercised to make sure that they are working properly and that staff are knowledgeable on how to use the systems in the case of an emergency.

ALL HAZARDS PLAN

The All Hazards Plan also known as the Emergency Operations Plan, or EOP, was updated in FY 18. Most of FCHD's plans are updated annually. Staff are also trained on the department's plans regularly to make sure that they are prepared if and when the plans are activated. Updating the plan not only met a preparedness deliverable but also was needed as documentation for re-accreditation through PHAB.

STATEWIDE NOTIFICATION DRILLS

FCHD participated in the KDPH Statewide Notification Drills and Satellite Radio Tests. FCHD houses a satellite radio which will help with communications during an emergency.

STRATEGIC NATIONAL STOCKPILE NETWORK

In October of 2017, we practiced our SNS (Strategic National Stockpile) Plan with our annual "3 For Free" flu clinic. The federal government has tasked each local health department/center in the U.S. to be ready to vaccinate their communities within an allotted time after a bioterrorism attack. We have been using the flu clinic as a way to test our plan and help the community learn how we would help in a time of need. Although our community participant numbers were down, the new location, Lakeview Park, has some positives that make it very useful for our mass clinics. FCHD previously received a NACCHO Model Practice Award for this event.

POWER OF PREPAREDNESS: PREPARE YOUR HEALTH



PERSONAL
PREPAREDNESS



PANDEMIC
PLANNING



POLICY AND
PARTNERSHIPS



PUBLIC HEALTH
RESPONSE

AUGUST 2019
 S M T W T F S
 1 2 3
 4 5 6 7 8 9 10
 11 12 13 14 15 16 17
 18 19 20 21 22 23 24
 25 26 27 28 29 30 31

SEPTEMBER 2019

NATIONAL PREPAREDNESS MONTH

OCTOBER 2019
 S M T W T F S
 1 2 3 4 5
 6 7 8 9 10 11 12
 13 14 15 16 17 18 19
 20 21 22 23 24 25 26
 27 28 29 30 31

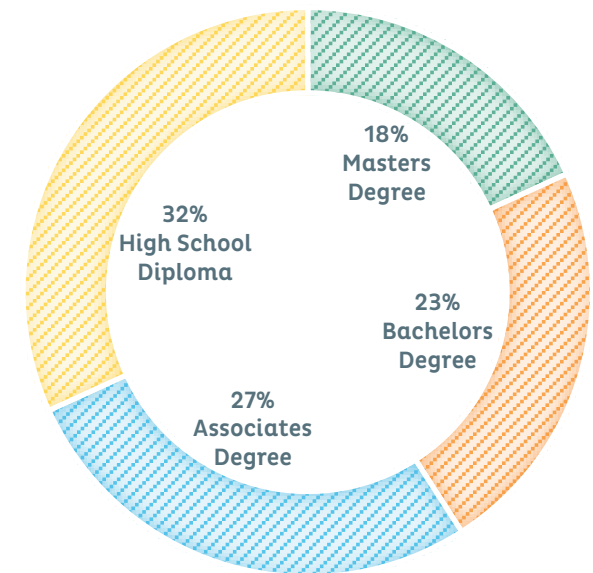
SUNDAY	MONDAY	TUESDAY	WEDNESDAY	THURSDAY	FRIDAY	SATURDAY
1	2 LABOR DAY FCHD CLOSED	3	4 FOOD HANDLERS CLASS 9:00AM AT PHC	5	6	7
8 NATIONAL GRANDPARENTS DAY	9	10	11 FOOD HANDLERS CLASS 9:00AM AT PHC	12	13	14
15	16	17	18 FOOD HANDLERS CLASS 9:00AM AT PHC	19	20	21
22	23	24	25 FOOD HANDLERS CLASS 9:00AM AT PHC	26	27	28
29	30					

WORLD RABIES DAY

Wealth of Knowledge

FCHD provides presentations and trainings at the local, state and national levels. Additionally, we participate in statewide and nation-wide trainings.

Education Levels of FCHD Staff



— FRANKFORT, KY —

- Reaccreditation Documentation Review with Three Rivers District Health Department
- Kentucky Youth Health Network Conference
- FCHD All-Staff Annual Trainings
- KDPCP Face to Face Meeting
- Share Fest
- Kentucky Safety and Prevention Alignment Network Quarterly Meeting
- Implicit Bias Training
- PIO Training
- Bridges Out of Poverty
- Suicide Prevention
- Hidden in Plain Site
- CPR
- Septic Installer Training

— LEXINGTON, KY —

- Evidence-Based Public Health: A Course in Chronic Disease Prevention
- Toxic Chemical Training for Medical Support Personnel
- KY Continuity of Operations Planning for Healthcare Facilities
- Kentucky Spring Radon Coalition Conference
- 2017 Falls and Osteoporosis Summit
- Kentucky School Nurse Association Conference
- Bost Health Policy Forum
- HANDS Academy
- Pest Control Short Course
- Pediatric Update

— LOUISVILLE, KY —

- National Network of Public Health Institutes Open Forum
- KHDA Retreat

— VERSAILLES, KY —

- Epi Rapid Response Team Training

— MOREHEAD, KY —

- Poverty Conference

— CHICAGO, IL —

- Safe America Meeting

— RALEIGH, NC —

- NALBOH Annual Training

— COVINGTON, KY —

- Kentucky Public Health Association (KPHA)

— BOWLING GREEN, KY —

- Children's Environmental Health Summit

— NEW ORLEANS, LA —

- NACCHO Annual Training

— DENVER, COLORADO —

- Sexual Health National Conference

— WASHINGTON D.C. —

- PHAB Reaccreditation Site Visitor Training

— ATLANTA, GA —

- Southeast Regional Adolescent Sexual Health Workshop

— STATEWIDE —

- Provided Mock PHAB Site Visits for Other Local Health Departments
- Monthly Kentucky Accreditation Coordinators Workgroup Meetings/Trainings
- Monthly Kentucky Health Department Association meetings
- Kentucky Public Health Association board meetings

SEPTEMBER 2019
S M T W T F S
1 2 3 4 5 6 7
8 9 10 11 12 13 14
15 16 17 18 19 20 21
22 23 24 25 26 27 28
29 30

OCTOBER 2019

NATIONAL HEALTH LITERACY MONTH

NOVEMBER 2019
S M T W T F S
1 2
3 4 5 6 7 8 9
10 11 12 13 14 15 16
17 18 19 20 21 22 23
24 25 26 27 28 29 30

SUNDAY	MONDAY	TUESDAY	WEDNESDAY	THURSDAY	FRIDAY	SATURDAY
		1 GET YOUR FLU SHOT!	2 FOOD HANDLERS CLASS 9:00AM AT PHC	3	4	5
6	7 NATIONAL CHILD HEALTH DAY	8	9 FOOD HANDLERS CLASS 9:00AM AT PHC	10	11	12
13	COLUMBUS DAY 14	15	16 BOSS'S DAY FOOD HANDLERS CLASS 9:00AM AT PHC	17	18	19
20	21	22	23 FOOD HANDLERS CLASS 9:00AM AT PHC	24	25	26
27	28	29	30 FOOD HANDLERS CLASS 9:00AM AT PHC	HALLOWEEN 31		

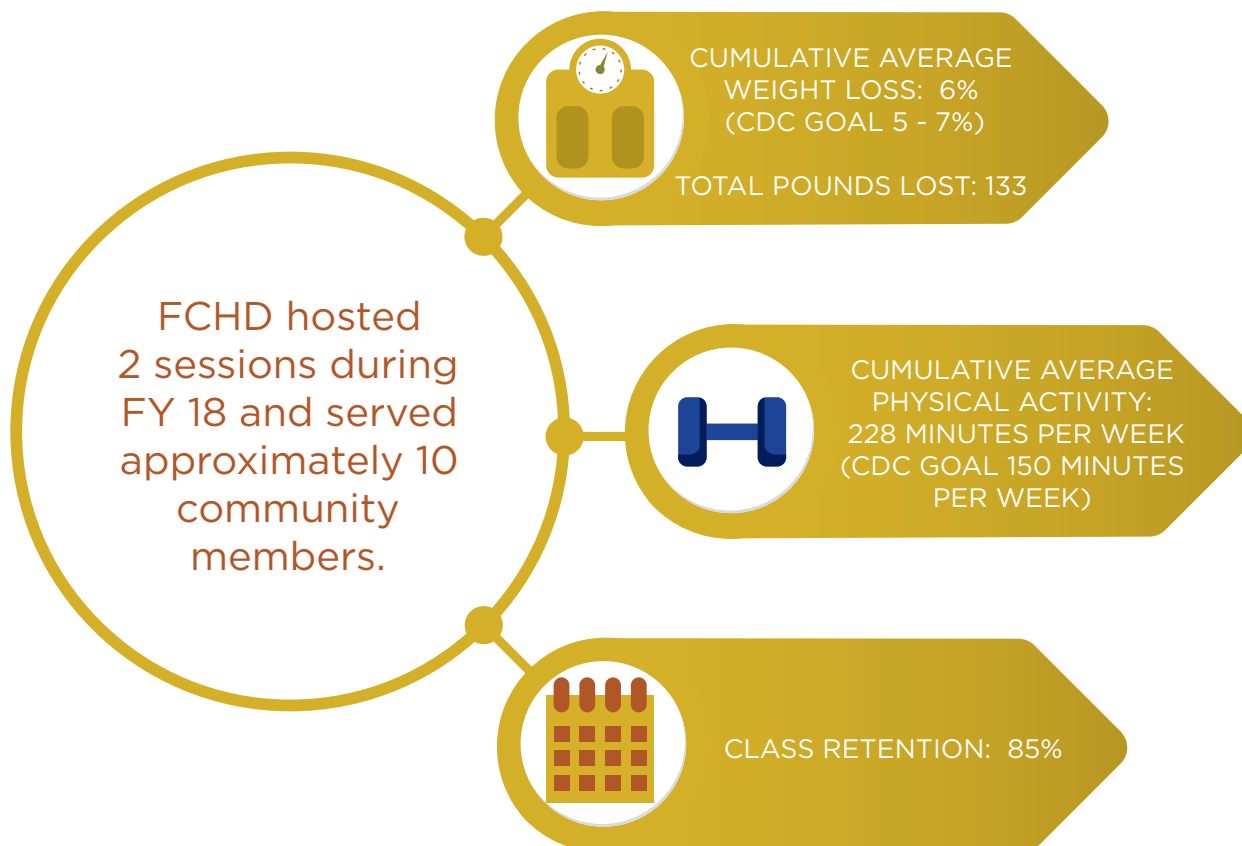


If you have prediabetes, getting type 2 diabetes doesn't have to be a sure thing. In fact, prediabetes can often be reversed. The National Diabetes Prevention Program (DPP) is a CDC-recognized diabetes prevention lifestyle change program to help prevent or delay type 2 diabetes. The program can also lower your risk of having a heart attack or stroke, improve your health overall, and help you feel more energetic. FCHD continues to work with local worksites to host DPP onsite during the employee's workday. The intensive year-long program continues to generate interest within worksites.

DIABETES SELF-MANAGEMENT EDUCATION AND SUPPORT CLASSES:

It is with great enthusiasm that we announce that in February 2018, FCHD's Healthy Living with Diabetes, Diabetes Self-Management Education and Support (DSMES) Classes was awarded full accreditation through the American Association of Diabetes Educators.

The DSMES program is designed for those individuals that have been diagnosed with Diabetes or assist in the care of an individual with diabetes. It is an 8-hour evidence-based program that covers many aspects of diabetes self-management.



OCTOBER 2019
 S M T W T F S
 1 2 3 4 5
 6 7 8 9 10 11 12
 13 14 15 16 17 18 19
 20 21 22 23 24 25 26
 27 28 29 30 31

NOVEMBER 2019

AMERICAN DIABETES MONTH

DECEMBER 2019
 S M T W T F S
 1 2 3 4 5 6 7
 8 9 10 11 12 13 14
 15 16 17 18 19 20 21
 22 23 24 25 26 27 28
 29 30 31

SUNDAY	MONDAY	TUESDAY	WEDNESDAY	THURSDAY	FRIDAY	SATURDAY
					1	2
3 DAYLIGHT SAVING TIME	4	5	6 FOOD HANDLERS CLASS 9:00AM AT PHC	7	8	9
10	VETERAN'S DAY 11	12	13 FOOD HANDLERS CLASS 9:00AM AT PHC	14	15	16
17	18	19	20 FOOD HANDLERS CLASS 9:00AM AT PHC	21 GREAT AMERICAN SMOKEOUT	22	23
24	25	26	27 FOOD HANDLERS CLASS 9:00AM AT PHC	THANKSGIVING 28 FCHD CLOSED	BLACK FRIDAY 29 FCHD CLOSED	30

Board of Health



Board of Health	2017-2018	2016-2017	2015-2016	2014-2015
Meetings				
Regular	4	4	4	4
Special	4	1	0	0
Subcommittee				
MAPP	0	1	1	1
Strategic Planning	N/A	N/A	N/A	2
Budget	N/A	N/A	2	1
KALBOH/NALBOH	1	1	1	0
Building	2	1	2	0
Policies				
New Policies	10	15	11	3
Revised Policies	135 (all)	125 (all)	4	110 (All)

FY 18 MEMBERS | REPRESENTATION

Dr. Charles Bradshaw, DMD, Chair | Dentist Representative
 Wayne Morris, RPH, Vice-Chair | Pharmacist Representative
 Dr. Paula Hoover, OD, Treasurer | Optometrist Representative
 Houston Wells, Judge Executive | County Judge Executive
 Joseph F. Grider, PE | Engineer Representative
 Stephen K. Hall, MD | Physician Representative
 Pamela J. Melton, RN | Nurse Representative
 Constance E. Morgan, RN | Consumer Representative
 Suresh Saxena, MD | Physician Representative
 Richard Tanner | Fiscal Court Representative
 Arba Kenner, MD | Physician Representative
 Denis King, DVM | Veterinarian Representative

APPOINTMENTS/MEMBERSHIP

The Secretary of the Cabinet for Health and Family Services appoints members to 118 of the 120 county or city-county boards of health based on KRS 212.020 and KRS 212.640. Fayette and Jefferson County board members are appointed by the mayor and fiscal court respectively.

- Membership is for 2 years and there is no restriction on the number of terms a member may serve, and include the county judge executive or designee, the mayor, city manager or designee of the city-county containing a city of the second class and a fiscal court appointee.
- Physicians, dentists, pharmacists and fiscal court appointee are appointed in even-numbered years; nurses, engineers, optometrists, veterinarians and laypersons are appointed in odd-numbered years.
- If one or more of the professionals do not reside in the county or are unwilling to serve, the Secretary may appoint a resident layperson in lieu of the vacancy.
- Members of boards of health receive no compensation for their services.
- Board of health members must reside in the county in which they serve KRS 212.855.
- The Secretary of the Cabinet for Health and Family Services shall remove any member, other than the county judge/executive or fiscal court appointee, who fails to attend three consecutive scheduled meetings and may remove board members according to KRS 65.007. The fiscal court may remove its appointee in like fashion.
- A member of a county or city-county board within that particular district must fill membership on the district board of health KRS 212.855.
- If the term of a county board of health member expires or the member cannot complete his/her term, the seat on the district board of health is declared vacant and the county or city-county board of health appoints another of its members to fill any unexpired portion of the term of the district board.
- Appointed members of the district boards may not begin to serve on the district board until the Secretary has certified their eligibility to serve on the district board.
- District board members hold office for a term of two years or until the successors are appointed.
- In accordance with KRS 212.020 and KRS 212.640 each county and city-county board of health must contain twelve members.
- In accordance with KRS 212.855 each district board (except the Northern Kentucky District) must include the county judge/executive or his designee from each county in the district as an ex officio voting member, and 1 additional resident per county per (15,000) population or fraction thereof, which must include the mayor, city manager, or designee of the city manager of each second class city as an ex officio voting member, except that the total number of members from any county cannot exceed seven members.
- The compositions of the boards must be in accordance with KRS 212.020, KRS 212.640 and KRS 212.855.

A GOVERNING BOARD MUST:

- Assure that the services provided meet the needs of the local citizenry, to protect and promote public health.
- Establish priorities and objectives based on a community assessment and resources of the agency for:
 - Service delivery, considering federal and state disease prevention and health promotion objectives; and
 - Specific health and safety needs of the community.
- Assure that financial controls and program evaluation measures are ongoing to facilitate effective and efficient agency services and operations.
- Interview and hire an agency director in accordance with KAR 8:040 through 902 KAR 8:140.
- Communicate board policies and priorities to the agency director:
 - Evaluate the performance of the agency director, at least annually. The director/administrator must have clear direction from the board and is accountable for execution of board policies;
 - Review information and data provided by the agency director to assess the effectiveness and efficiency of the agency in complying with federal and state public health laws, regulations, and board policies; and
 - Promote professionalism in health department operations in fulfilling its public health mission.

NOVEMBER 2019
 S M T W T F S
 1 2
 3 4 5 6 7 8 9
 10 11 12 13 14 15 16
 17 18 19 20 21 22 23
 24 25 26 27 28 29 30

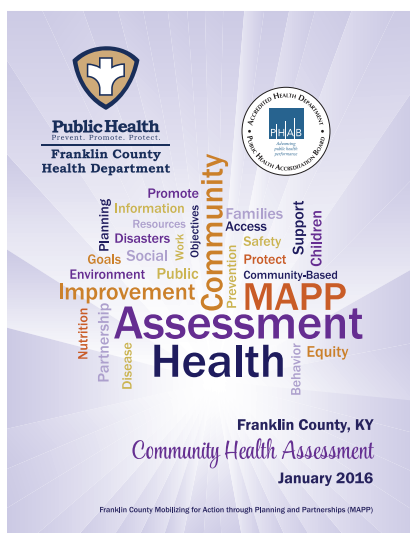
JANUARY 2020
 S M T W T F S
 1 2 3 4
 5 6 7 8 9 10 11
 12 13 14 15 16 17 18
 19 20 21 22 23 24 25
 26 27 28 29 30 31

DECEMBER 2019

SAFE TOYS AND CELEBRATIONS MONTH

SUNDAY	MONDAY	TUESDAY	WEDNESDAY	THURSDAY	FRIDAY	SATURDAY
1 WORLD AIDS DAY	2 CYBER MONDAY	3	4 FOOD HANDLERS CLASS 9:00AM AT PHC	5	6	7
8	9	10	11 FOOD HANDLERS CLASS 9:00AM AT PHC	12	13	14
15	16	17	18 FOOD HANDLERS CLASS 9:00AM AT PHC	19	20	21
22	23	CHRISTMAS EVE 24 FCHD CLOSED	CHRISTMAS DAY 25 FCHD CLOSED	26	27	28
29	30	NEW YEAR'S EVE 31 FCHD CLOSED				

FCHD's Plans



Community Health Assessment (CHA)

Franklin County MAPP was formed in December 2008, and is supported by the Franklin County Health Department (FCHD). Coalition members consist of community members and key stakeholders within Franklin County. Members followed a community health improvement planning model, Mobilizing for Action through Planning and Partnerships (MAPP). It is developed by the National Association of County and City Health Officials (NACCHO) in cooperation with the Centers for Disease Control and Prevention (CDC). The coalition assessed Frankfort/Franklin County's strengths and needs and formulated a plan to address identified concerns. This is Franklin County MAPP's second iteration of the MAPP cycle. The first iteration started in 2008 with the formation of the MAPP coalition and the first Community Health Assessment (CHA) was completed in September of 2011.



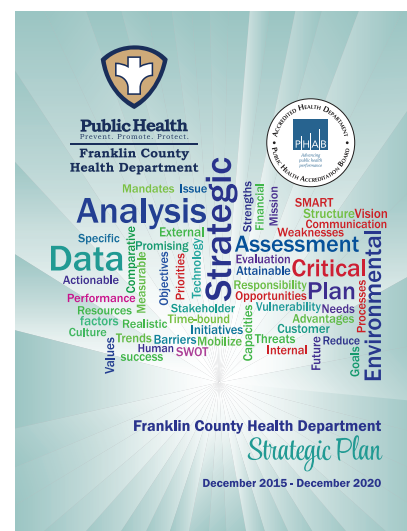
Quality Improvement (QI) Plan

The purpose of FCHD's QI plan and Accreditation and QI Policy is to foster a culture of quality improvement through continuous improvement of programs, services and administration. This goal is also reflected in FCHD's 2015-2020 Strategic Plan.



Community Health Improvement Plan (CHIP)

According to the National Association of County and City Health Officials (NACCHO), a Community Health Improvement Plan (CHIP) is a long-term, systematic effort to address public health problems based on the results of a community health assessment (CHA) and a community health improvement process. CHIPs help to provide support for developing new policies and determining health promotion strategies. It should define a shared vision for community health through collaboration with diverse partners and address the broad range of strengths, weaknesses, challenges, and opportunities that exist within the community to improve health. A CHIP looks outside of the performance of FCHD to the way in which the activities of many organizations contribute to community health improvement.



Strategic Plan

Driven by data, FCHD's Strategic Plan sets long-term goals that are targeted, specific and achievable. These goals build upon and leverage relationships with internal and external stakeholders. Six goals were presented, revised and agreed upon during an all-staff meeting.

1. Improve health outcomes of Frankfort/Franklin County.
2. Increase branding.
3. Increase workforce development.
4. Increase funding/revenue.
5. Improve infrastructure (including technology).
6. Improve culture of QI.

Number of Services FCHD Has Provided

Community Health Education	2017-2018	2016-2017	2015-2016	2014-2015	2013-2014
Presentations	121	125	60	18	32
DSME Classes	2	4	3	7	5
Participants Completing DSME	6	23	9	14	N/A
DPP Programs	12	6	2	N/A	N/A
DPP Participants	109	91	15	N/A	N/A
Freedom From Smoking Classes	3	4	2	1	N/A
Freedom From Smoking Participants	14	10	13	6	N/A
MAPP Coalition Meetings	21	22	4	3	3
Diabetes Coalition Meetings	7	2	4	4	6
Miscellaneous Coalition Meetings/Calls	118	155	42	39	N/A
Environmental Services	2017-2018	2016-2017	2015-2016	2014-2015	2013-2014
Food Service/Retail Food Activities	1,323	1,086	1,562	1,603	1,641
Animals Vaccinated at Rabies Clinics	0	0	498	850	1,100
Onsite Sewage Activities	753	759	716	804	767
Nuisance Complaint Investigations	115	57	140	85	234
Animals Quarantined	52	46	40	64	109
Public Facility Service Activities	777	791	1,015	1,521	1,548
Food Handler Certifications	546	514	562	483	359
Food Manager Certifications	9	12	16	23	13
Clinic Services	2017-2018	2016-2017	2015-2016	2014-2015	2013-2014
Pediatric	7,686	7,433	8,806	46,320*	38,605*
Family Planning	6,212	8,087	8,024	10,905	12,631
Prenatal	502	522	538	423	466
WIC/Nutrition Services	10,535	11,223	12,348	13,206	13,745
Tuberculosis	2,806	2,448	2,504	1,831	1,346
Sexually Transmitted Diseases	1,990	3,260	5,671	6,274	6,133
Adult Health	5,669	5,652	8,013	8,127	9,495
Preventive Cancer	700	1,009	902	1,001	1,476

*includes school health services

School Health Services	2017-2018	2016-2017	2015-2016	2014-2015	2013-2014
Total Visits	57,787	72,573	57,917	N/A	N/A
Unduplicated Visits	48,017	61,450	50,638	N/A	N/A
Number of Students (PEF'd)	38,826	48,502	39,943	N/A	N/A
Students Sent Home	1,344	1,867	1,547	N/A	N/A
Number of IEP Students	7,314	7,469	6,096	N/A	N/A
Vision and Hearing Screenings	358	238	163	N/A	N/A
Referrals	896	1,125	1,025	N/A	N/A
Social Service Notifications	12	21	21	N/A	N/A
Assisted with Social Service Call	11	23	33	N/A	N/A
School Staff Visits	1,416	1,836	1,153	N/A	N/A
HANDS	2017-2018	2016-2017	2015-2016	2014-2015	2013-2014
Transfers/Re-enter	8	N/A	N/A	N/A	N/A
Pre Surveys	64	N/A	N/A	N/A	N/A
Post Surveys	19	N/A	N/A	N/A	N/A
Home Visits	2,187	N/A	N/A	N/A	N/A
Professional Visits	248	N/A	N/A	N/A	N/A
Exits	67	N/A	N/A	N/A	N/A
Total Visits	2,518	N/A	N/A	N/A	N/A
Home Health	2017-2018	2016-2017	2015-2016	2014-2015	2013-2014
Nursing	2,966	4,505	3,252	3,703	3,906
Home Health Aide	370	641	672	594	716
Physical Therapy	3,552	4,482	3,267	4,017	4,025
Speech Therapy	15	43	35	0	0
Occupational Therapy	572	781	573	566	632
Social Services	0	0	0	0	0
Assessment and Reassessment	0	11	19	24	24
Case Management	166	213	293	382	423
Homemaker	1,838	1,320	725	1,038	1,410
Personal Care	2,208	1,877	1,498	2,087	2,454
Respite	23	0	0	0	117
Traditional	481	825	520	557	566
Waiver	8	41	2	3	10
EPSDT (Early and Periodic Screening Diagnosis and Treatment)	0	5	3	0	0



FCHD has continued to see an increase in participants in the Franklin County Harm Reduction Syringe Exchange Program (FCHRSEP). In FY18 there were a total of 2,469 to the program. That is a 66% increase in visits from FY17. During FY18 the program collected 89,480 syringes that were disposed of safely.

Additionally, FCHRSEP has a 75% return rate for syringes, this does include the syringes given at the first visit when there are no syringes to be returned.

For more information on the program you may call our clinic at 502-564-7647.

FCHRSEP is open daily 8:00 am - 4:30 pm and located within the FCHD Clinic.

Impact of PENSION COSTS on the HEALTH OF COMMUNITIES

MISCONCEPTION

Retirement increase will be covered with state funds in FY19.

FACT

Local Health Departments are not included, which increased our liability to \$38.5 million for our workforce.

Should the proposed biennium budget pass...

A 120 LHDs **will be liable**
L **\$38.5 MILLION**
L **in retirement expenses.**
That means...

- WIC services to be reduced by 57,579 Kentuckians
- Pediatric/Immunization services to be reduced by 21,679 Kentuckians
- Tuberculosis services reduced by 18,650 Kentuckians
- Required reportable diseases surveillance/treatment reduced by 13,645 Kentuckians
- Statutory required restaurant inspections reduced by 17,302 inspections
- Statutory required inspections of schools, hotels, public swimming pools, and campgrounds to be reduced by 12,042 inspections
- Statutory required septic tank installation oversight reduced by 5,738 inspections

LHD workforce would be reduced by 35% over the next 2 years

Lack of funding will result in:

Increased cases of preventable chronic disease
Increased infant mortality rate
Increased tuberculosis outbreaks
Increased cases of HIV and Hep C
Increased food borne illness
Increased polluted water table



Kentucky Health Departments Association

Allison Adams, President
606-584-5540

Steven Bing, Executive Director
502-875-2255

	Franklin Co.	Kentucky	Rank (of 120)
Demographics			
Population	50,560	4,436,974	
% Below 18 years of age	21.0%	22.8%	
% 65 and older	17.2%	15.6%	
% Non-Hispanic African American	10.7%	8.1%	
% American Indian and Alaskan Native	0.3%	0.3%	
% Asian	2.0%	2.0%	
% Native Hawaiian/Other Pacific Islander	0.0%	0.1%	
% Hispanic	3.0%	3.5%	
% Non-Hispanic white	81.8%	85.0%	
% Not proficient in English	1.0%	1.0%	
% Females	51.7%	50.7%	
% Rural	27.6%	41.6%	
Health Outcomes			32
Length of Life			33
Premature Death	8,600	9,000	
Quality of Life			39
Poor or fair health	17.0%	21.0%	
Poor physical health days	4.3	4.8	
Poor mental health days	4.2	4.8	
Low birthweight	10.0%	9.0%	
Premature age-adjusted mortality*	430	470	
Child mortality*	70	60	
Infant mortality*	7	7	
Frequent physical distress*	13.0%	16.0%	
Frequent mental distress*	12.0%	15.0%	
Diabetes prevalence*	15.0%	13.0%	
HIV prevalence*	129	180	
Health Factors			36
Health Behaviors			37
Adult smoking	20.0%	24.0%	
Adult obesity	34.0%	34.0%	
Food environment index	7.6	7	
Physical inactivity	24.0%	28.0%	
Access to exercise opportunities	88.0%	72.0%	
Excessive drinking	15.0%	16.0%	
Alcohol-impaired driving deaths	10.0%	28.0%	
Sexually transmitted infections	557.3	395.2	
Teen births	36	38	
Food insecurity*	15.0%	16.0%	
Limited access to healthy foods*	6.0%	6.0%	
Drug overdose deaths*	27	28	
Drug overdose deaths - modeled*	16-17.9	33.5	
Motor vehicle crash deaths*	11%	17.0%	
Insufficient sleep*	34%	39%	

	Franklin Co.	Kentucky	Rank (of 120)
Clinical Care			
Uninsured	7.0%	7.0%	61
Primary care physicians	2,650:1	1,510:1	
Dentists	1,330:1	1,560:1	
Mental health providers	900:1	520:1	
Preventable hospital stays	88	77	
Diabetic monitoring	83.0%	86.0%	
Mammography screening	45.0%	59.0%	
Uninsured adults*	8.0%	8.0%	
Uninsured children*	5.0%	4.0%	
Health care costs*	\$13,097	\$10,466	
Other primary care providers*	1,532:1	885:1	
Social & Economic Factors			43
High school graduation	79.0%	89.0%	
Some college	62.0%	60.0%	
Unemployment	4.0%	5.0%	
Children in poverty	21.0%	24.0%	
Income inequality	3.9	5.1	
Children in single-parent households	38.0%	35.0%	
Social associations	20.4	10.7	
Violent crime	268	215	
Injury deaths	79	88	
Homicides*	5	5	
Disconnected youth*	19.0%	16.0%	
Median household income*	\$52,400	\$46,600	
Children eligible for free/reduced lunch*	57.0%	59.0%	
Firearm fatalities*	13	15	
Physical Environment			66
Air pollution – particulate matter	10.2	10.0	
Drinking water violations	No		
Severe housing problems	16.0%	14.0%	
Driving alone to work	85.0%	82.0%	
Long commute – driving alone	20.0%	29.0%	



**County Health
Rankings & Roadmaps**
A Healthier Nation, County by County

*Additional factors not included in overall ranking
Blank values reflect unreliable missing data

www.countyhealthrankings.org, 2018